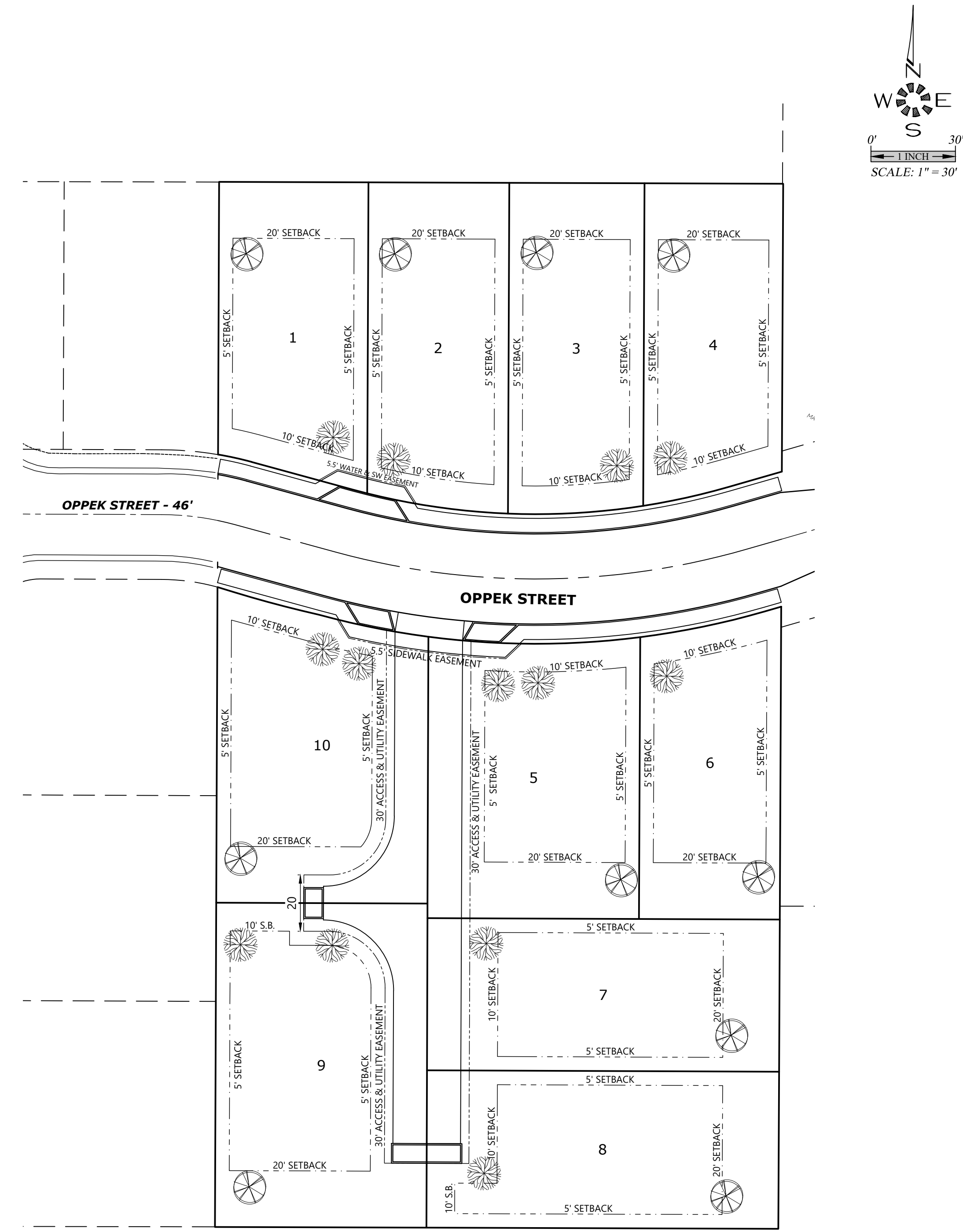


TREE REMOVAL



TREE REPLACEMENT

50 EXISTING TREES WITHIN BOUNDARY  
ALL EXISTING TREES MAY BE REMOVED

13 PROPOSED STREETScape TREES  
10 PROPOSED REPLACEMENT TREES  
90 REPLACEMENT TREES TO BE PAID  
TO CITY OF KEIZER LANDSCAPE  
MITIGATION FUND

NOTE:  
ALL STREETScape TREES &  
REPLACEMENT TREES TO BE  
MIN. 2" CALIPER

- ⊗ = EXISTING TREES WHICH MAY BE REMOVED
- ☀ = PROPOSED STREETScape TREES
- ⊗ = PROPOSED REPLACEMENT TREES

**TREE REMOVAL &  
REPLACEMENT PLAN**

**BOHLANDER PROPERTY**

NO CHANGES, MODIFICATIONS  
OR REPRODUCTIONS TO BE  
MADE TO THESE DRAWINGS  
WITHOUT WRITTEN  
AUTHORIZATION FROM THE  
DESIGN ENGINEER.  
DIMENSIONS & NOTES TAKE  
PRECEDENCE OVER  
GRAPHICAL REPRESENTATION.

7559 702-7REE

Design: M.D.G.  
Drawn: M.K.D.  
Checked: J.J.G.  
Date: ---  
Scale: AS SHOWN  
As-Built: ---



EXPIRES: 06-30-2025  
JOB # 7559